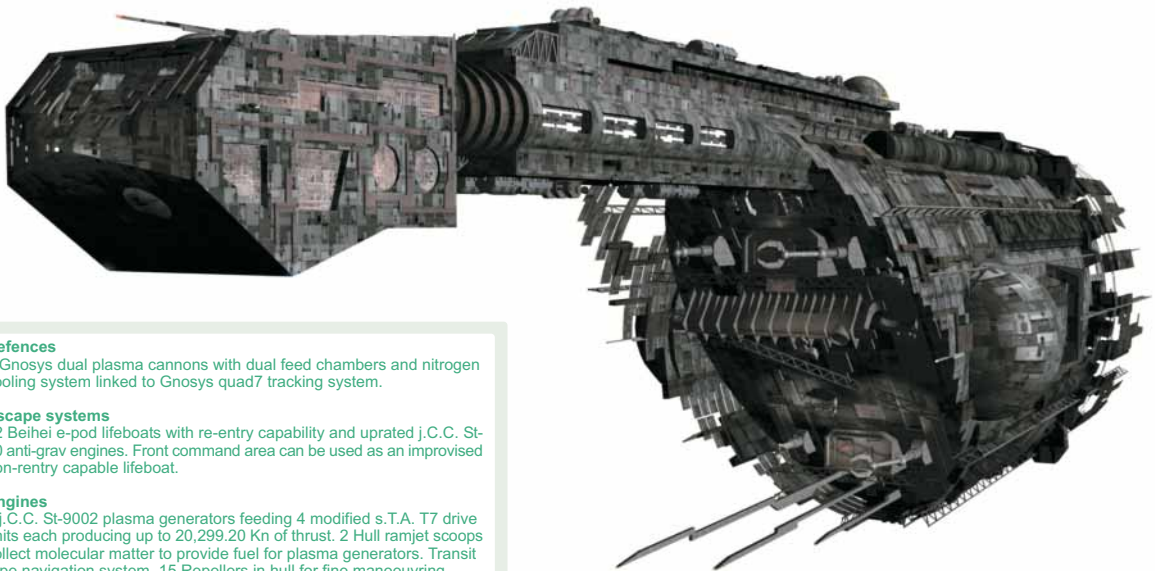
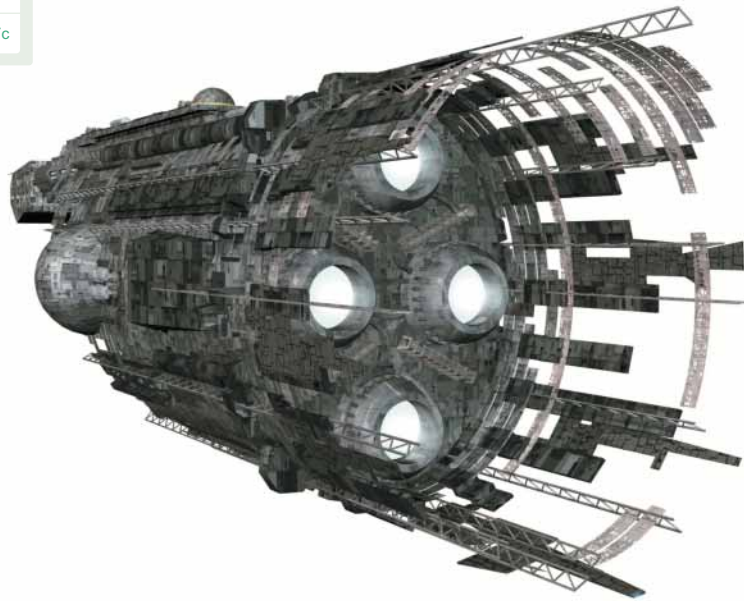




T	Overall Length:	190m
	Width (excluding domes):	32m
	Height (at widest part):	42m
	Tonnage (mean):	28.7k
	Speed (off transit pipe):	0.377c



S

Defences

9 Gnosys dual plasma cannons with dual feed chambers and nitrogen cooling system linked to Gnosys quad7 tracking system.

Escape systems

22 Beihei e-pod lifeboats with re-entry capability and uprated j.C.C. St-80 anti-grav engines. Front command area can be used as an improvised non-re-entry capable lifeboat.

Engines

8 j.C.C. St-9002 plasma generators feeding 4 modified s.T.A. T7 drive units each producing up to 20,299.20 Kn of thrust. 2 Hull ramjet scoops collect molecular matter to provide fuel for plasma generators. Transit Pipe navigation system. 15 Repellers in hull for fine manoeuvring.

Original Designation: Heavy Goods Freighter

Current Registration: Exploration and Salvage Vessel

Current Owner: Captain Joseph Morgan

Ship's Manifest: 126 personnel

T	Overall Length:	5.2m
	Width (wingspan):	7.4m
	Height (total):	2.3m
	Tonnage (mean):	2.64mt
	Speed (max):	0.512c



S **Weapons Consignment**
2 T-Mat particle emitters (variable rate of fire 1 -8000ppm).
2 Windlass sky cannon plasma launchers (800ppm).

Escape systems
Single "Last Chance" EVE containment, detachable cockpit with 0G and atmospheric manoeuvring engines. Life support 72 hour max.

Engines
4 Lockheed/Fairburn field pulse drive units each producing up to 12,600 Kn of thrust. 4 manoeuvring engines (includes 2 omni-directional units).

Original Designation: Omni Theatre Attack Craft
Current Registration: Gcon - Contingency Stockpile
Current Owner: Classified
Crew: 1 (0 with remote unit engaged)